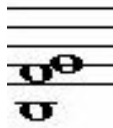


MONSTERS OF HARMONY



Chords!



Chords!



Chords!

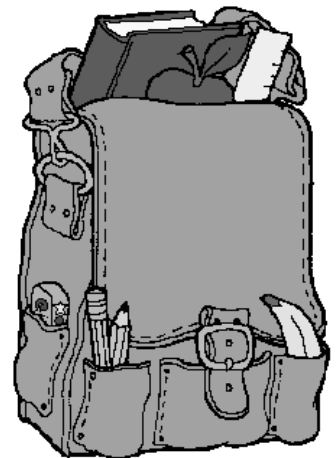
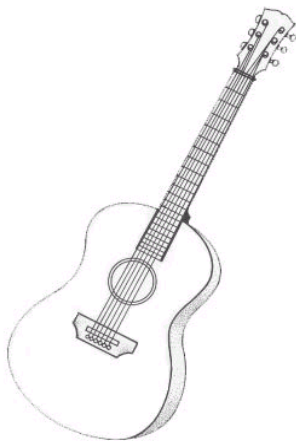
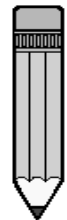


Jollip: a Monster of Harmony!

The sound of “ch” in “school” or “chords” = K

The sound of “ch” in “child” or “cheerful” = ch

Circle everything whose name has the sound of “ch” as in “child” or “cheerful”



This program was made possible by the generous support of listeners like you.