

**REMEMBER:** Choral music means lots of people singing together. The Santa Fe Desert Chorale has four voice parts: soprano, alto, tenor and bass.

<b>** PASSPORT **</b>					
<i>be sure to mark or stamp each country that you visit</i>					
Spain		Italy		Germany	
Norway		Alaska, USA		New Mexico, USA	

Did you mark each country you visited on your passport?  
 Draw lines to:

Spain →

Alaska, USA →

Norway →

Germany →



**MULTIPLE CHOICE:**

What did Jollip ride in Venice, Italy?

- A. cable car      B. gondola      C. express train

Some natives of Alaska are called:

- A. Norwegians      B. Spaniards      C. Eskimos

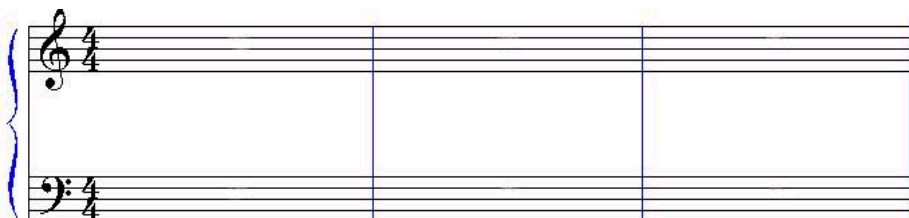
Which song from the Revolutionary War did the Chorale sing?

- A. Yankee Doodle      B. Buttermilk Hill      C. Promised Land

**EXTRA CREDIT: NOTE READING SKILLS**



*Review: a sharp placed in front of a note raises the note by one half step; a flat lowers the note by one half step. Sharps look like "pound" or "number" signs, flats look like small letter "b"s. Try writing some half notes and quarter notes; then place sharps and flats in front of them.*



*This program was made possible by support from the William H. and Lillian Dolde Charitable Trust and the New Mexico Department of Tourism.*