

**Remember:** *William Grant Still (1895-1978) was one of America's first important African-American composers.*



**MULTIPLE CHOICE:**

In music, what is a movement?

- A. a dance
- B. to speed up or slow down
- C. part of a larger work

What is a stereotype?

- A. an old CD player
- B. an idea people have about you that isn't right
- C. a special section of music

**TRUE or FALSE**

- |  |   |   |
|--|---|---|
| Violence is the best way to solve arguments.   | T | F |
| Some orchestras would not play the music of William Grant Still because he was an African-American composer. | T | F |
| Still dedicated a piece to his pet monster named Shep.   | T | F |
| You can hear jazz and blues in some of Still's classical music.  | T | F |

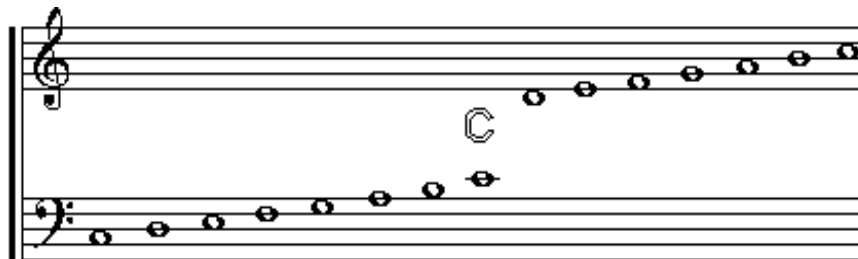
**THINK ABOUT IT:**

If someone told you that you could not participate in class, or play a sport, or go to a concert because of the color of your skin, how would you feel? Circle the words that describe why discrimination and racial prejudice are wrong:

- |         |      |          |         |       |       |
|---------|------|----------|---------|-------|-------|
| unfair  | okay | legal    | hurtful | right | wrong |
| illegal | fun  | ignorant | smart   | fair  |       |

**EXTRA CREDIT: NOTE READING SKILLS**

TREBLE  
CLEF



BASS  
CLEF

*You know how it's done, so fill in the rest of the notes!*